

# Newnes campground

## Wollemi National Park



### Overview

Relax in dramatic surrounds at this free and car-accessible campground by the Wolgan River in World Heritage Wollemi National Park, just north of the Blue Mountains.

Number of campsites	80
Camping type	Tent, Camper trailer site, Camping beside my vehicle
Facilities	Barbecue facilities, toilets
Price	Free.
Bookings	Camping is very popular during school holidays, and sites may be scarce. Sites are allocated on a first-come, first-served basis.
Please note	<ul style="list-style-type: none"><li>• Bookings are not available; the campground operates on a first-in, first-served basis so it's a good idea to arrive early in the day, especially if you're camping on public holidays or during school holidays</li><li>• Water is not available at this campground so you'll need to bring your own supply for drinking and cooking</li><li>• Remember to treat or boil all water taken from creeks in the park</li><li>• Please take your rubbish with you when you leave</li></ul>

Welcome to Mother Nature's amphitheatre. Dramatic sandstone cliffs and proud eucalypt trees make for a majestic backdrop at this beautiful, grassy, flat campground by the Wolgan river.

Pitch your tent for free and enjoy a picnic under the trees before heading out to explore the tracks, tunnels and ovens of the historic shale oil ruins nearby, or cool off with a paddle or lilo in the river. There are easy walks for taking in the dramatic scenery. Enjoy a fascinating journey back into the past on [Newnes Industrial Ruins walk](#), and kids will love visiting the luminous Glow Worm tunnel, just a short drive away.

You can also camp on the other side of the river; however you can only access this camping area by foot or 4WD across the ford near the Newnes Hotel.

### Local alerts

For the latest updates on fires, closures and other alerts in this area, see <https://www.nationalparks.nsw.gov.au/camping-and-accommodation/campgrounds/newnes-campground/local-alerts>

## Operated by

Blue Mountains Heritage Centre

🕒 9am to 4.30pm daily. Closed Christmas Day.

☎ 02 4787 8877

✉ [bluemountains.heritagecentre@environment.nsw.gov.au](mailto:bluemountains.heritagecentre@environment.nsw.gov.au)

📍 End of Govetts Leap Road, Blackheath NSW 2785

## Park info

🗺 in [Wollemi National Park](#) in the [Sydney and surrounds](#), [North Coast](#) and [Country NSW](#) regions

🕒 Wollemi National Park is always open but may have to close at times due to poor weather or fire danger.

☎ **Mudgee office**  
02 6370 9000  
Contact hours: Monday to Friday, 9am to 4:30pm.  
27 Inglis Street, Mudgee NSW 2850  
Email: [npws.mudgee@environment.nsw.gov.au](mailto:npws.mudgee@environment.nsw.gov.au)

☎ **Bulga office**  
02 6574 5555  
Contact hours: Monday to Friday, 9.30am to 4pm.  
2156 Putty Road, Bulga NSW 2330  
Email: [npws.wollemiyengo@environment.nsw.gov.au](mailto:npws.wollemiyengo@environment.nsw.gov.au)

☎ **Blue Mountains Heritage Centre**  
02 4787 8877  
Contact hours: 9am to 4.30pm daily. Closed Christmas Day.  
End of Govetts Leap Road, Blackheath NSW 2785  
Email: [bluemountains.heritagecentre@environment.nsw.gov.au](mailto:bluemountains.heritagecentre@environment.nsw.gov.au)

☎ **Richmond office**  
02 4588 2400  
Contact hours: Monday to Friday , 9.30am to 4pm.  
Bowmans Cottage, 370 Windsor Street, Richmond NSW 2753  
Email: [npws.hawkesburynattai@environment.nsw.gov.au](mailto:npws.hawkesburynattai@environment.nsw.gov.au)

## Visitor info

All the practical information you need to know about Newnes campground.

## Getting there and parking

Newnes campground is on the western side of Wollemi National Park. To get there:

- Turn off the Castlereagh Highway at Lidsdale, 7km west of Lithgow
- Newnes is 35km from the turnoff
- Access to the other campground on the opposite side of the Wolgan river is by walking or driving across the ford near the Newnes Hotel - take care as the river levels can rise rapidly



### Road quality

- Unsealed roads



### Vehicle access

- 2WD vehicles



### Weather restrictions

- 4WD required in wet weather



### Parking

Parking is available at Newnes campground.

## Best times to visit

There are lots of great things waiting for you in Wollemi National Park. Here are some of the highlights.



### Autumn

With its softer light, autumn is the perfect time of year to head out to photograph or paint Wollemi's extraordinary landscapes.



### Spring

With the temperature warming up, dig out the canoe and head to picturesque Ganguddy (Dunns swamp) for a cruise along the waterways.



### Summer

Escape the heat and join an illuminating tour of the Glow Worm tunnel.

## Facilities



### Toilets

- Non-flush toilets



### Barbecue facilities

- Wood barbecues (bring your own firewood)
- Fire rings (bring your own firewood)

## Maps and downloads



Newnes campground factsheet

## Safety messages



### Adventure sports

Adventure sports like climbing, caving, canyoning and abseiling offer a thrilling opportunity to explore our unique environments. Before you head out, be aware of the risks and stay safe during adventure sports.

### **Camping safety**

Whether you're pitching your tent on the coast or up on the mountains, there are many things to consider when camping in NSW national parks. Find out how to stay safe when camping.

### **Fire safety**

During periods of fire weather, the Commissioner of the NSW Rural Fire Service may declare a total fire ban for particular NSW fire areas, or statewide. Learn more about total fire bans and fire safety.

### **Mobile safety**

Dial Triple Zero (000) in an emergency. Download the Emergency+ app before you visit, it helps emergency services locate you using your smartphone's GPS. Please note there is limited mobile phone reception in this park and you'll need mobile reception to call Triple Zero (000).

### **Paddling safety**

To make your paddling or kayaking adventure safer and more enjoyable, check out these paddling safety tips.

### **River and lake safety**

The aquatic environment around rivers, lakes and lagoons can be unpredictable. If you're visiting these areas, take note of these river and lake safety tips.

### **Water activities**

Beaches, rivers and lakes in NSW national parks offer lots of opportunities for water activities. Please take care in the water and find out how to help your family and friends stay safe around water.

Check the weather before you set out as the river level can rise rapidly and access to the camping area on the other side of Wolgan river is only accessible by foot or 4WD across the ford

## **Prohibited**

### **Gathering firewood**

Whether you're pitching your tent on the coast or up on the mountains, there are many things to consider when camping in NSW national parks. Find out how to stay safe when camping.

Firewood is not supplied and collecting firewood in the park is not permitted, so it's a good idea to bring your own supply

### **Pets**

Pets and domestic animals (other than certified assistance animals) are not permitted. Find out which regional parks allow dog walking and see the pets in parks policy for more information.

### **Smoking**

NSW national parks are no smoking areas.

## **Nearby towns**

Hartley (38 km)

The small village of Hartley features one of the finest collections of historic buildings in Australia, providing a captivating look into the country's colonial past.

[www.visitnsw.com](http://www.visitnsw.com)

## Katoomba (54 km)

Katoomba is at the heart of most of the stunning natural attractions that make up the Blue Mountains National Park. You can admire deep valleys, sandstone plateaus, waterfalls and native animals from the many walking trails and lookouts near Katoomba.

[www.visitnsw.com](http://www.visitnsw.com)

## Lithgow (32 km)

Hassans Walls Lookout, near Lithgow, is the highest in the Blue Mountains. Admire Mt Wilson, Mt York, Mt Tarana and Mt Blaxland as well as the pretty Hartley Valley below. To the south are the Kanimbla and Megalong valley, and Mt Bindo. While there, go for a walk or ride around the lookout.

[www.visitnsw.com](http://www.visitnsw.com)

## Learn more

Newnes campground is in Wollemi National Park. Here are just some of the reasons why this park is special:

## Ancient connections



The area that is now Wollemi National Park has held significance to Aboriginal people for at least 12,000 years. Evidence of this connection can be seen throughout the park, including ceremonial grounds, stone arrangements, grinding grooves, scarred trees and rock engravings. There are around 120 known Aboriginal sites in the park and probably many more yet to be discovered. The Wiradjuri, Dharug, Wanaruah and Darkinjung people have a strong and ongoing cultural association with their traditional lands and waters.



### **Pagoda Lookout walking track**

Pagoda Lookout walking track is a short but steep walk near Rylstone in Wollemi National Park. Enjoy incredible views over ancient pagoda rock formations and the Cudgegong River.

## Geological marvels





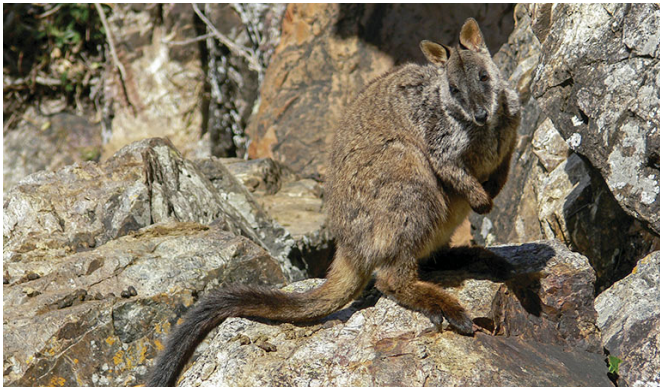
Wollemi's landscape has been sculpted over millennia into a magnificent network of soaring sandstone escarpments, plunging gorges and canyons, winding river valleys and awe-inspiring geological and geomorphological features such as pagoda rock formations, basalt-capped mountains and diatremes. The spectacular Colo gorge and its tributaries form the most extensive sandstone canyon system in eastern Australia. Grab your camera and discover for yourself the breathtaking vistas and natural marvels that make this a World Heritage treasure.



#### **Pagoda Lookout walking track**

Pagoda Lookout walking track is a short but steep walk near Rylstone in Wollemi National Park. Enjoy incredible views over ancient pagoda rock formations and the Cudgegong River.

## Nature's haven



It's little surprise that Wollemi's spectacular landscape shelters a rich diversity of plants and animals. The rare Wollemi pine - a 'living fossil' whose closest relatives thrived some 90 million years ago was rediscovered here in 1994, and the park protects an incredible array of botanical species and communities, from open eucalypt forest and woodlands including Hawkesbury and grey box, to rainforests and perched swamps. This variety makes it an appealing habitat for eastern grey kangaroos, red-necked wallabies and the elusive brush-tailed rock wallaby, as well as the beautifully marked broad-headed snake, regent honeyeater and glossy black cockatoo. Around 55 species of butterfly have also been recorded.

## Outdoor adventure



Pitch a tent at one of Wollemi's great campgrounds, like the secluded Colo Meroo backpack campground, the car-accessible Coorongooaba campground or the dramatically-situated, car-accessible Newnes campground. With your base set up, you're free to get out and enjoy the park's fantastic outdoor attractions, be they more relaxed pursuits such as picnicking, canoeing and swimming or something more adventurous like rock climbing, horseriding and hiking.

## Plants and animals you may see

### Animals



#### **Superb lyrebird** (*Menura novaehollandiae*)

With a complex mimicking call and an elaborate courtship dance to match, the superb lyrebird is one of the most spectacular Australian animals. A bird watching must-see, the superb lyrebird can be found in rainforests and wet woodlands across eastern NSW and Victoria.



#### **Common wombat** (*Vombatus ursinus*)

A large, squat marsupial, the Australian common wombat is a burrowing mammal found in coastal forests and mountain ranges across NSW and Victoria. The only other remaining species of wombat in NSW, the endangered southern hairy-nosed wombat, was considered extinct until relatively recently.



#### **Southern boobook** (*Ninox novaeseelandiae*)

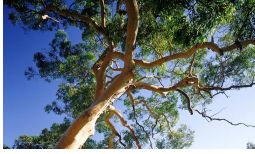
The southern boobook, also known as the mopoke, is the smallest and most common native owl in Australia. With a musical 'boo-book' call that echoes through forests and woodlands, the southern boobook is a great one to look out for while bird watching.



#### **Satin bowerbird** (*Ptilonorhynchus violaceus*)

With vibrant blue-violet eyes and curious antics, the satin bowerbird is a favourite for bird watching and easy to spot as it forages for food in open forest. Relatively common across eastern Australia, in NSW they're found in coastal rainforests and adjacent woodlands and mountain ranges.

### Plants



### Smooth-barked apple (*Angophora costata*)

Smooth-barked apple gums, also known as Sydney red gum or rusty gum trees, are Australian native plants found along the NSW coast, and in the Sydney basin and parts of Queensland. Growing to heights of 15-30m, the russet-coloured angophoras shed their bark in spring to reveal spectacular new salmon-coloured bark.

---

## Environments in this park



Eucalypt forest environments

## Education resources (1)



What is a national park?, Stage 2 (Years 3-4), HSIE