

## **WOOMERA PROHIBITED AREA – GREEN ZONE EXCLUSION PERIOD FOR NOVEMBER 2014 – STUART HIGHWAY,**

The Stuart Highway will be closed for a daily period of up to six (6) hours between 17<sup>th</sup> and 30<sup>th</sup> November, 2014. Currently the planned closure times are 0800 to 1400 daily. It should be noted that this is an important variation to the previously notified conditions. Two maps have been provided by the **Woomera Prohibited Area Coordination Office** and these are shown at attachments A and B to this Blog.

The “Standing Permissions” for access to the Stuart Highway between the Bon Bon rest stop (S30.35678, E135.32844) and the Woomera Prohibited Area boundary North of Glendambo (S30.91611, E135.70000) will be suspended for up to six hours per day during the period **17 November to 30 November 2014** as detailed at Attachment B.

Standing permission for access to the Woomera Village, Olympic Dam – Pimba Road (also known as the Olympic Dam Highway) (B97), Lake Cadibarrawirracanna Road (Public Access Route 18), William Creek Road and Tarcoola to Darwin Railway **will not** be affected by this Green Zone exclusion period.

Further information about the exclusion periods and the management zones is available on the WPA Coordination Office website at: [www.defence.gov.au/woomera](http://www.defence.gov.au/woomera).

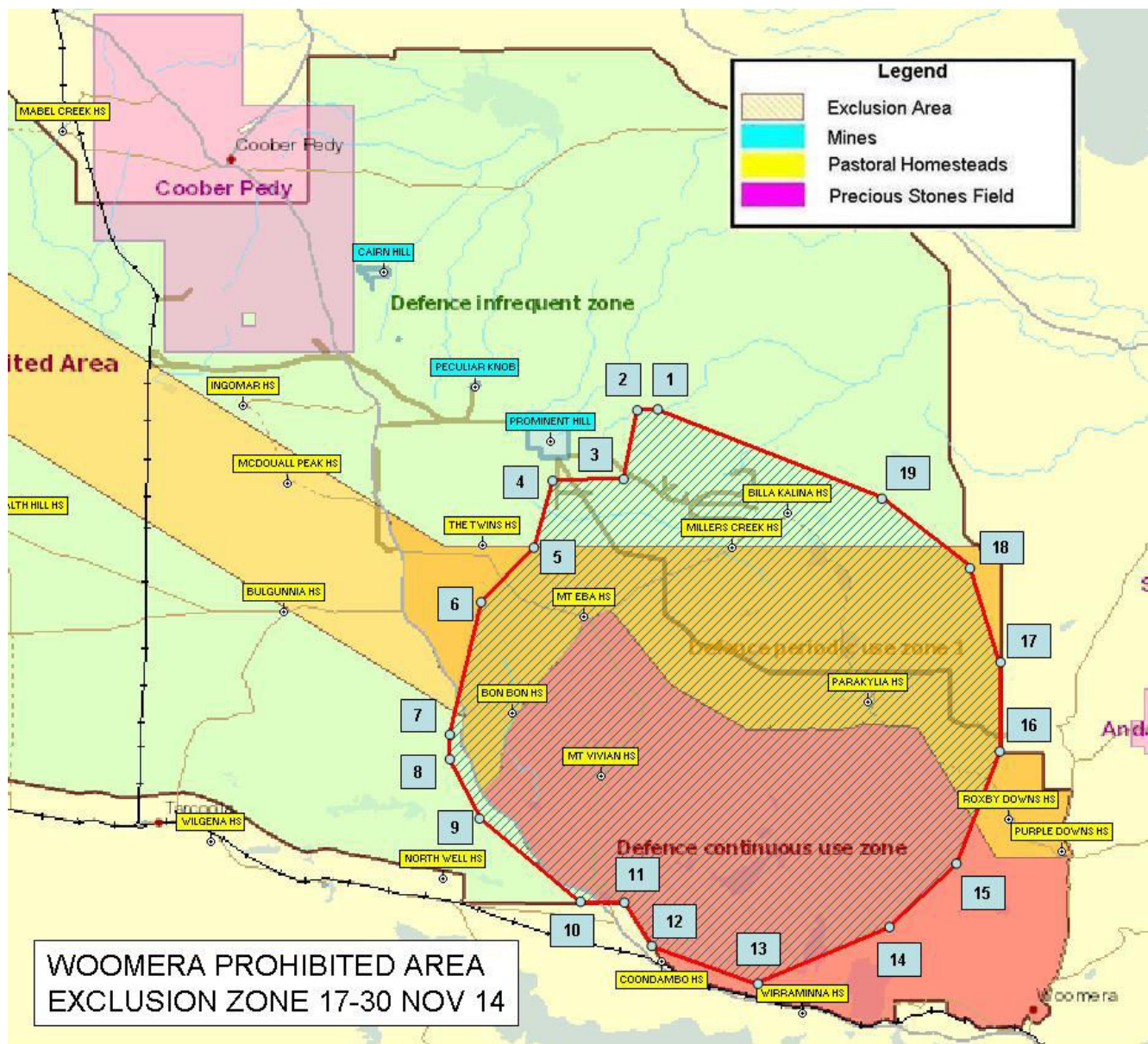
If you have any queries, please contact the WPA Coordination Office by phone on 1300 727 420 or by email to [WPACO@defence.gov.au](mailto:WPACO@defence.gov.au).

You may also contact the Woomera Test Range Operations Office on (08) 8674 3370.

## WOOMERA PROHIBITED AREA EXCLUSION AREA 17 NOVEMBER to 30 NOVEMBER 2014

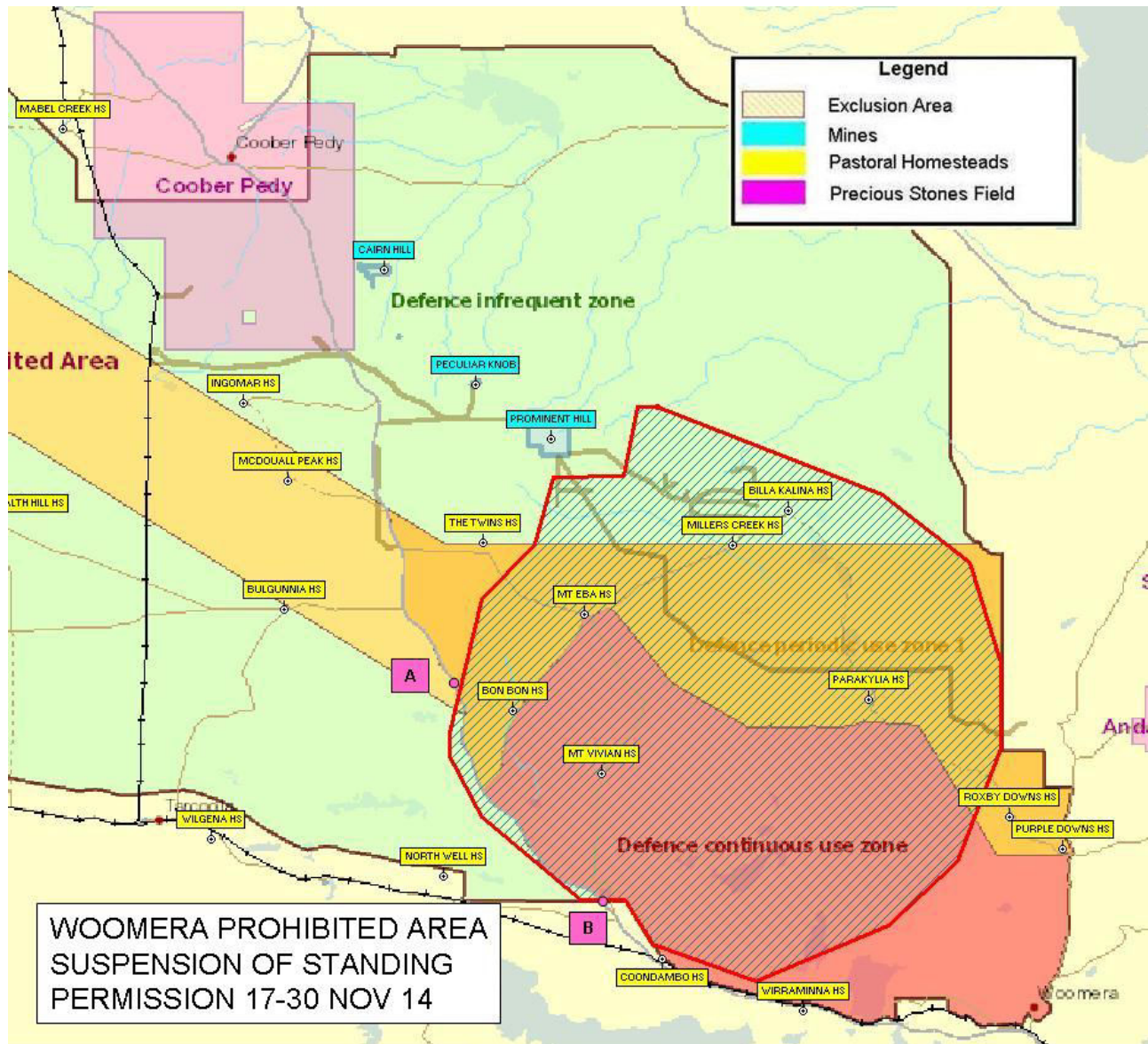
The Green Zone exclusion area 17 November to 30 November 2014 is the area of land contained within a line between the following points:

Point 1 - S 29.64732 , E 135.84909,	Point 2 - S 29.64764 , E 135.79789,
Point 3 - S 29.82748 , E 135.76237,	Point 4 - S 29.83004 , E 135.58157,
Point 5 - S 30.00092 , E 135.53293,	Point 6 - S 30.14172 , E 135.39853,
Point 7 - S 30.48540 , E 135.31533,	Point 8 - S 30.54684 , E 135.31437,
Point 9 - S 30.70236 , E 135.39757,	Point 10 - S 30.91548 , E 135.65293,
Point 11 - S 30.91644 , E 135.76589,	Point 12 - S 31.02876 , E 135.83789,
Point 13 - S 31.12444 , E 136.10413,	Point 14 - S 30.98236 , E 136.44173,
Point 15 - S 30.82012 , E 136.61997,	Point 16 - S 30.53180 , E 136.73325,
Point 17 - S 30.30748 , E 136.73325,	Point 18 - S 30.04956 , E 136.65133,
Point 19 - S 29.87420 , E 136.42765	



## SUSPENSION OF STANDING PERMISSION, STUART HIGHWAY 17 NOVEMBER to 30 NOVEMBER 2014

Location: An 85 km section of the Stuart Highway will be closed for up to six hours each day during the exclusion period (17 November to 30 November) between the Bon Bon rest stop (A-S30.35678, E135.32844) and the Woomera Prohibited Area boundary North of Glendambo (B-S30.91611, E135.70000) as shown below.



### Dates and times:

Closures will occur during the following times (ACDT):

### Dates and time

Mon 17 Nov 14    0800-1400

Tue 18 Nov 14    0800-1400

Wed 19 Nov 14	0800-1400
Thu 20 Nov 14	0800-1400
Fri 21 Nov 14	0800-1400
Sat 22 Nov 14	0800-1400
Sun 23 Nov 14	0800-1400
Mon 24 Nov 14	0800-1400
Tue 25 Nov 14	0800-1400
Wed 26 Nov 14	0800-1400
Thu 27 Nov 14	0800-1400
Fri 28 Nov 14	0800-1400
Sat 29 Nov 14	0800-1400
Sun 30 Nov 14	0800-1400

#### Other information

On road closure days uniformed personnel will staff the road closure points to prevent access. Public or portable toilets will be available at each road closure point.

The road closure will be lifted each day as soon as the test has been concluded.

#### Updates

For further information on road closures, please contact the Woomera Test Range on (08) 8674 3370.